





# CERTIFICATE OF LOCATION OF GOVERNMENT CORNER

County of Anoka

State of Minnesota

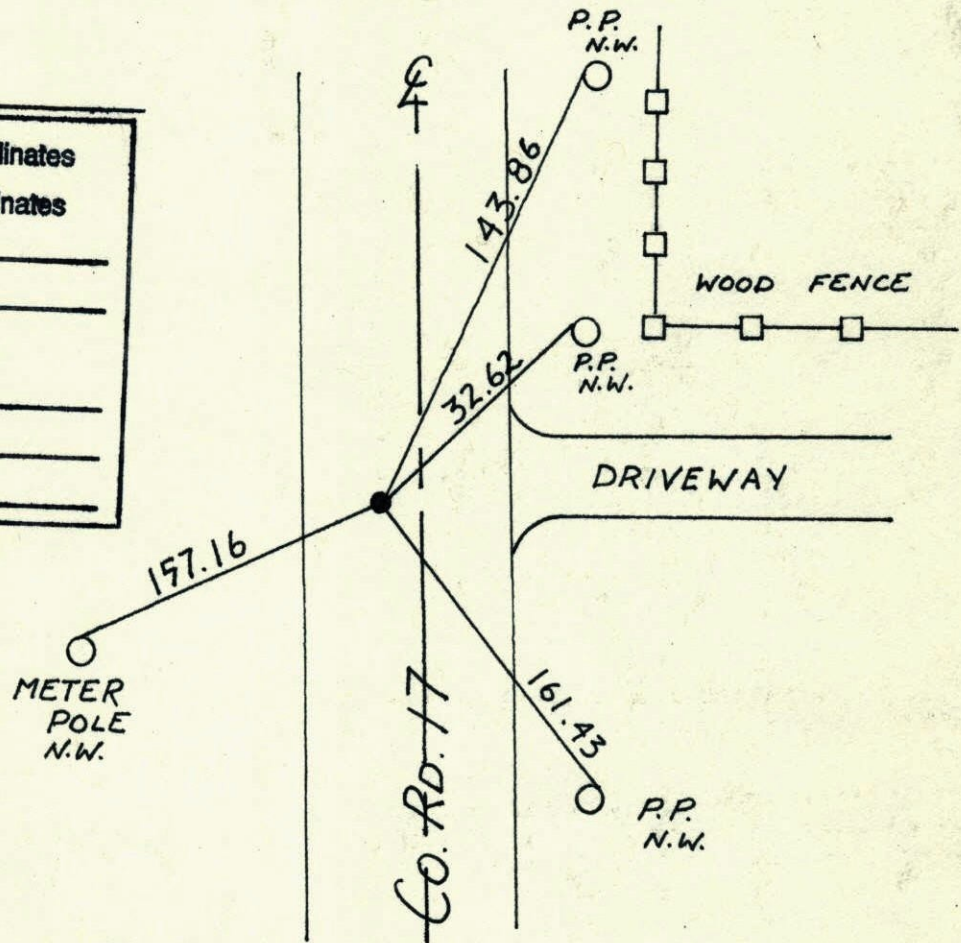
NORTHEAST Corner of Sec. 1 Township 32 Range 23

I hereby certify that on the 1 day of JULY, 1966, I found the described corner which was evidenced by RESURVEY

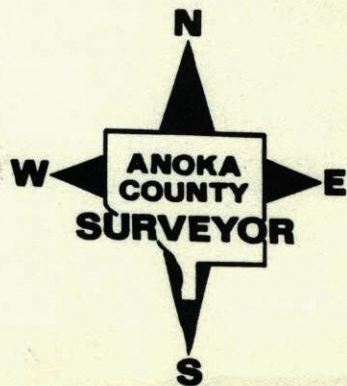
and I further certify that to perpetuate the location of said corner, I did, at the exact location thereof, place a permanent marker consisting of CAST IRON

which reference or witness monuments are located in the manner following:

N.A.D.	1983	Co-ordinates
County	Project	Co-ordinates
Northing	<u>195594.8988</u>	
Easting	<u>531962.6281</u>	
State Plane Co-ordinates		
Y	_____	
X	_____	
Date	_____	



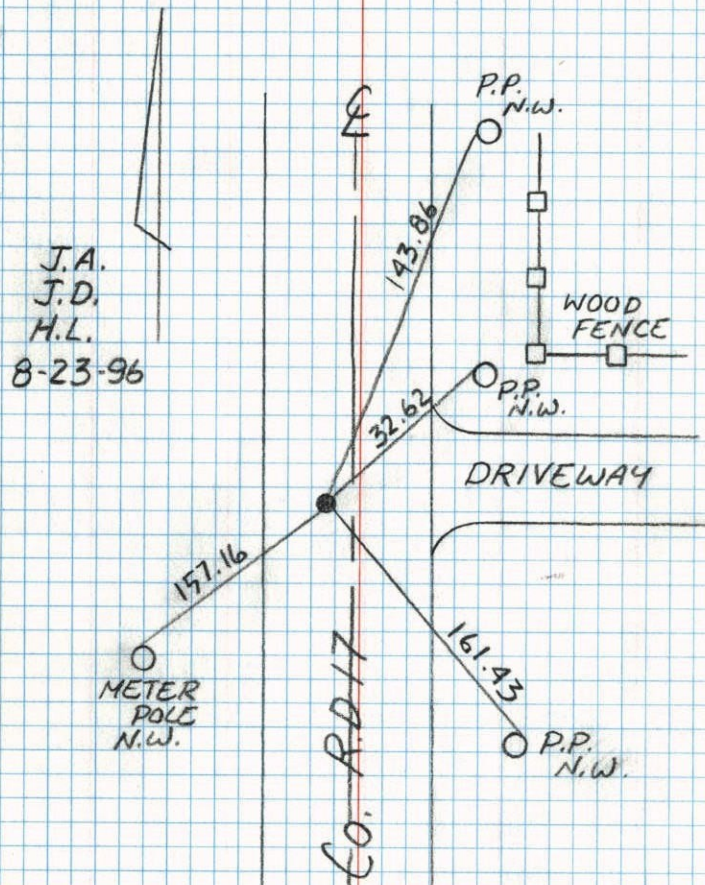
Revised date	Revised date	Revised date
<u>10-15-91</u>		
<u>8-23-96</u>		





N.E. COR. SEC. 1 T-32 R-23

RETIED C.I. MON.

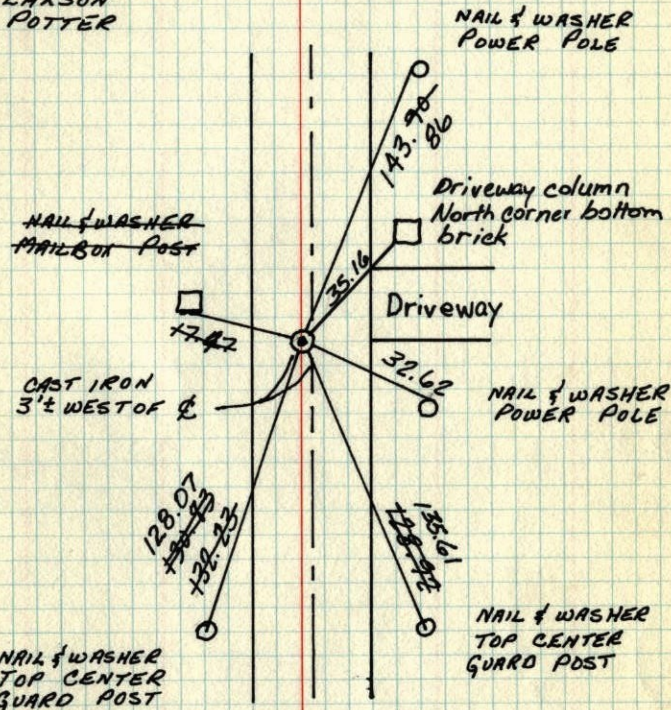


N.E. COR. SEC. 1 - T32 - R23

SET CAST IRON MONUMENT FROM RESURVEY.

P.K.'S 2.00' NORTH & EAST.

1 JUL 66  
H. LARSON  
D. POTTER



NAIL & WASHER TOP CENTER GUARD POST

TIE CHECK  
5 JUN 78  
D. DAHL  
M. KISROW  
B. STEPHENS

TIE CHECK  
6-22-81  
P. ROSS  
P. HORRBY  
G. NEFFINGER

TIE CHECK  
JUN 26, 1984  
R. BENNETT  
D. ROSS  
G. LIPS

TEMPERATURE CORRECTED  
AND HORIZONTALLY  
TAPED MEASUREMENTS

ROLAND W. ANDERSON  
COUNTY SURVEYOR  
ANOKA COUNTY, MINNESOTA



NE Cor. Sec 1-T32-R23

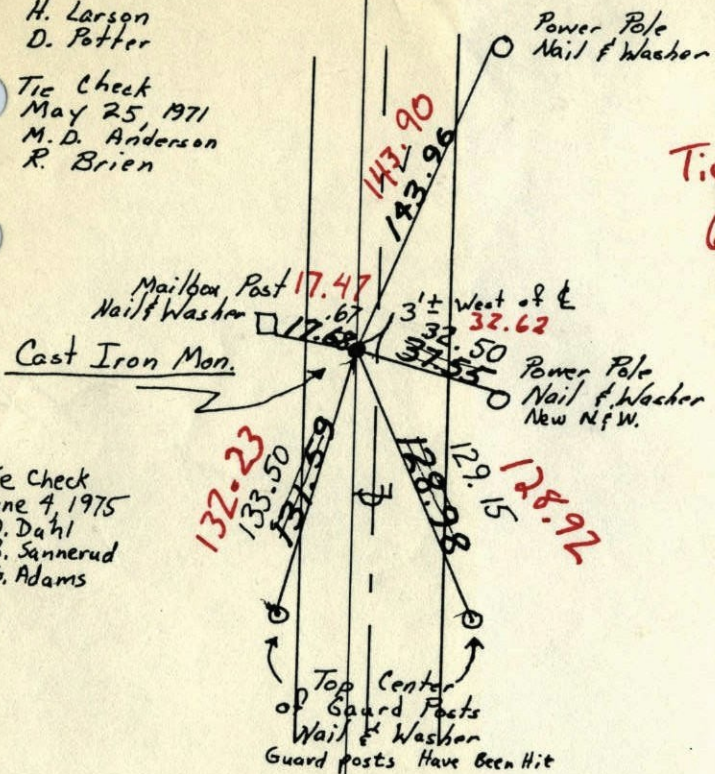
Set cast iron monument from resurvey.

P.K.'s 2.00' N & E.

July 1, 1966

H. Larson  
D. Potter

Tie Check  
May 25, 1971  
M. D. Anderson  
R. Brien



Tie Check  
June 4, 1975  
D. Dahl  
B. Sannerud  
G. Adams

Tie Check  
6-5-78  
D. Dahl  
M. Kisrow  
B. Stephens

New Tape

TEMPERATURE CORRECTED  
AND HORIZONTALLY  
TAPED MEASUREMENTS

ROLAND W. ANDERSON  
COUNTY SURVEYOR  
ANOKA COUNTY, MINNESOTA

NE Cor. Sec 1-T32-R23

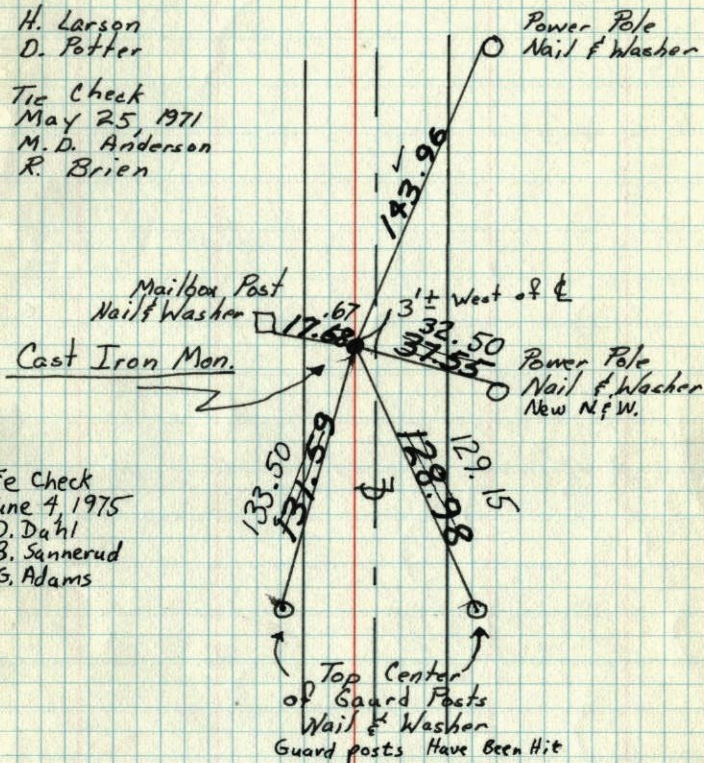
Set cast iron monument from resurvey.

P.K.'s 2.00' N & E.

July 1, 1966

H. Larson  
D. Potter

Tie Check  
May 25, 1971  
M. D. Anderson  
R. Brien



Tie Check  
June 4, 1975  
D. Dahl  
B. Sannerud  
G. Adams

TEMPERATURE CORRECTED  
AND HORIZONTALLY  
TAPED MEASUREMENTS

ROLAND W. ANDERSON  
COUNTY SURVEYOR  
ANOKA COUNTY, MINNESOTA

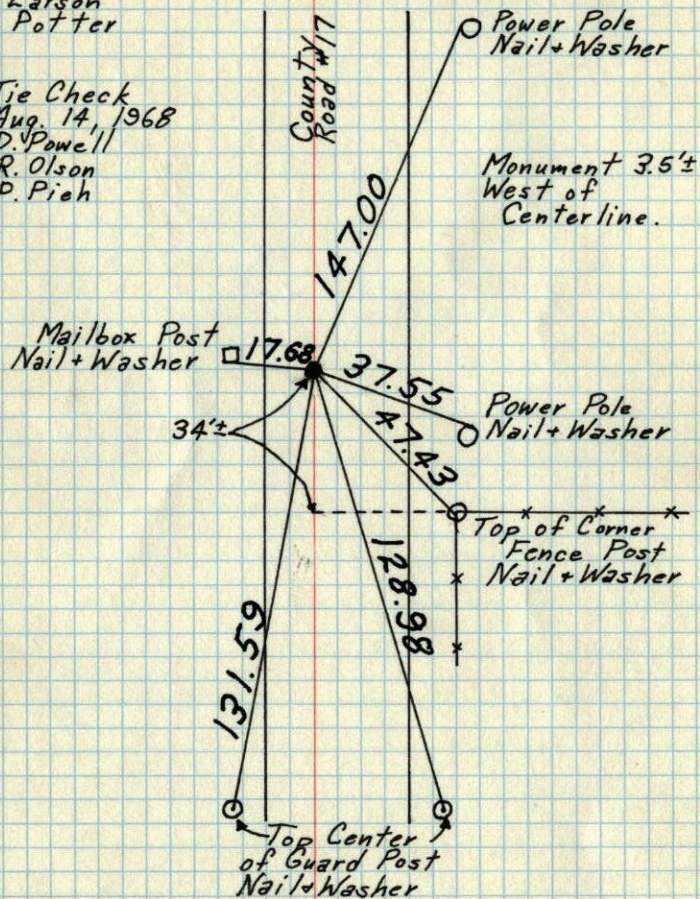


# NE Cor. Sec. 1 - T32 - R23

Set Cast Iron Monument from resurvey.  
PK's 2.00' North + East.

July 1, 1966  
H. Larson  
D. Potter

Tie Check  
Aug. 14, 1968  
D. Powell  
R. Olson  
P. Pieh



TEMPERATURE CORRECTED  
AND HORIZONTALLY  
TAPED MEASUREMENTS

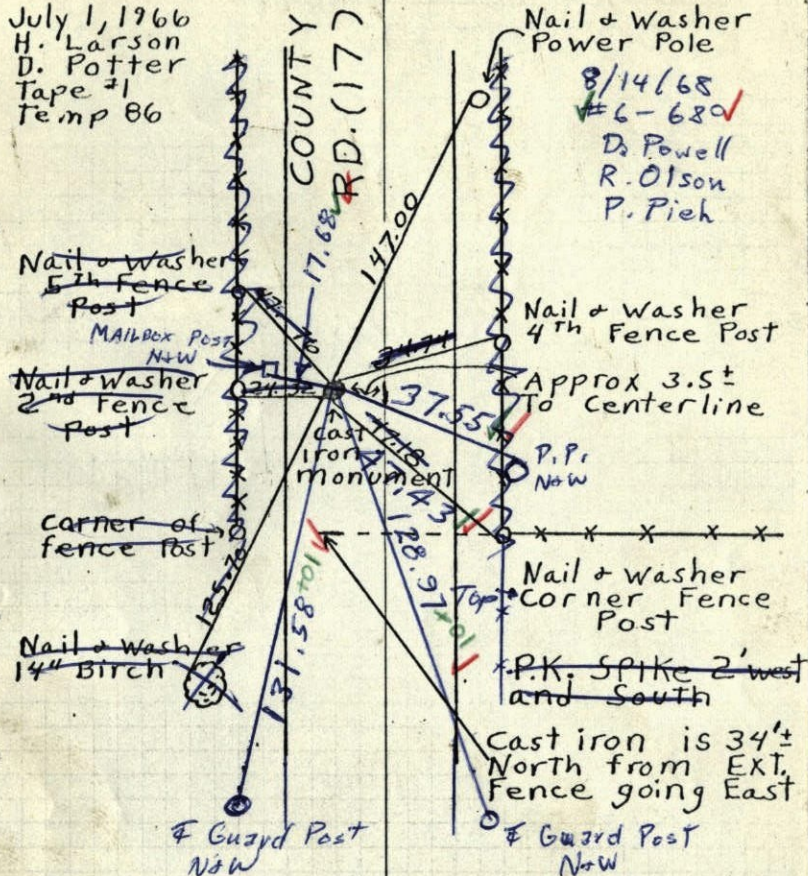
ROLAND W. ANDERSON  
COUNTY SURVEYOR  
ANOKA COUNTY, MINNESOTA

# N.E Cor. Sec. 1 T32 R23

Set cast iron monument from  
Resurvey PK's 2.00' N+E.

July 1, 1966  
H. Larson  
D. Potter  
Tape #1  
Temp 86

Nail + Washer  
Power Pole  
8/14/68  
#6-680  
D. Powell  
R. Olson  
P. Pieh



TEMPERATURE CORRECTED  
AND HORIZONTALLY  
TAPED MEASUREMENTS

ROLAND W. ANDERSON  
COUNTY SURVEYOR  
ANOKA COUNTY, MINNESOTA



